



Fagen Friedman & Fulfroft LLP

Public Hearing Trustee Area Map Options



April 23, 2025

Brandon Lallande, *F3 Law*
David Kaitz, *MGT*

F3law.com



What is the California Voting Rights Act (“CVRA”)?

- Took effect January 1, 2003
- Prohibits the use of “at-large” elections when such an election system:

“impairs the ability of a protected class to elect candidates of its choice or its ability to influence the outcome of an election....”

(Elections Code § 14027.)



What is a “By-Trustee Area” Election System?

- *Only safe harbor from a CVRA claim*
- School district is divided into trustee areas
- A governing board member is elected from each trustee area
- Board members are elected **by only the registered voters in the particular trustee area** where the governing board member resides



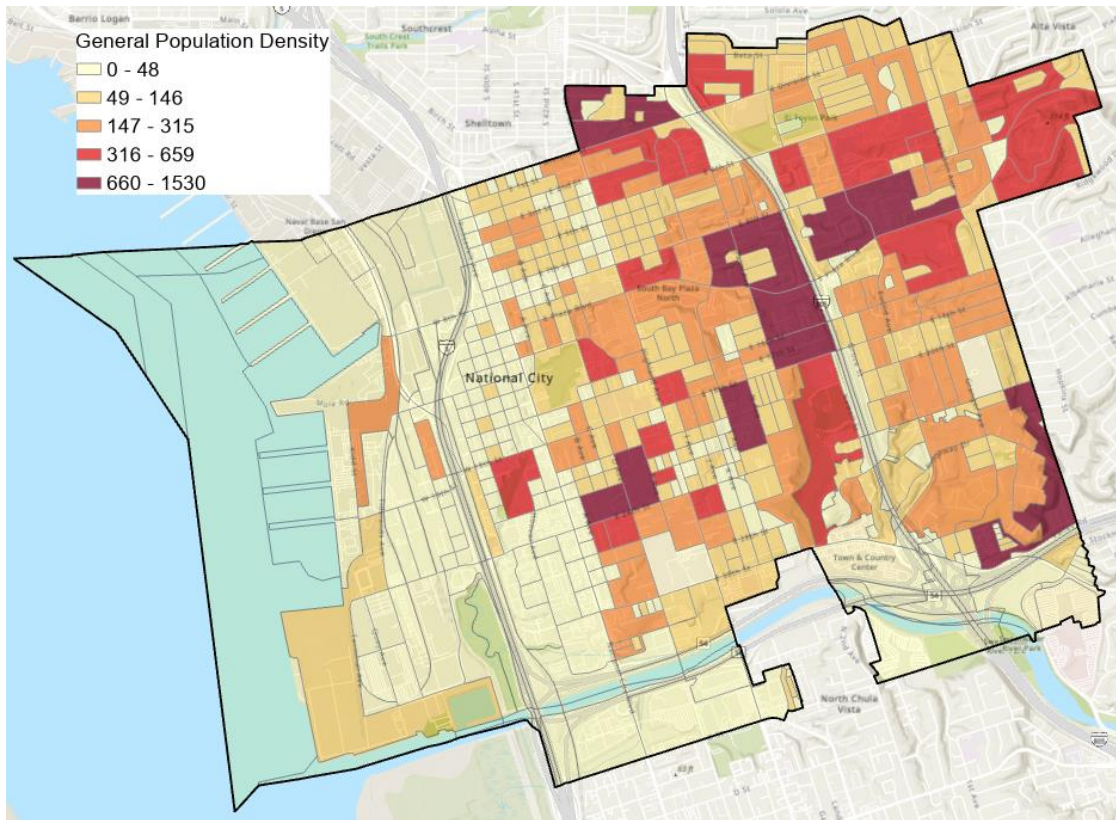
Keep in mind...

- With a total population of **56,520**, *each Trustee Area* will include ***approximately 11,304 people***.
- The difference between the largest and smallest trustee areas can be no more than 1,130 people.
- Census Blocks vary significantly in shape, size, and population totals.
- Census Blocks generally are not to be “split” with a Trustee Area boundary line – since we would lose the accuracy of the population balancing count.



District's Demographics

2020 Census Data (Total Population)

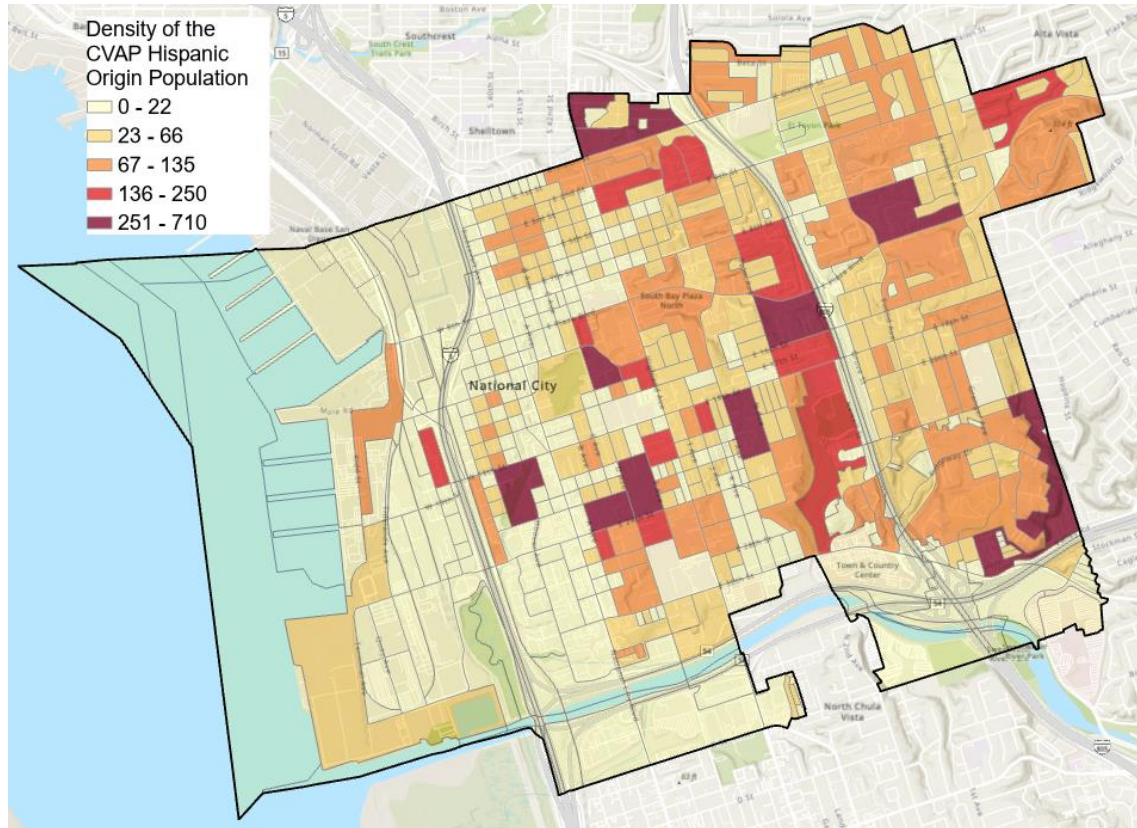


Race / Population Breakdowns	56,520
Hispanic/Latino	37,666
	66.64%
White	4,487
	7.94%
Asian	10,606
	18.77%
Black/African American	1,925
	3.41%
Native Hawaiian/Pacific Islander	287
	0.51%
American Indian/Alaska Native	123
	0.22%
Other	166
	0.29%
Two or More Races	1,260
	2.23%



District's Demographics

Hispanic Citizen Voting Age Population Estimates

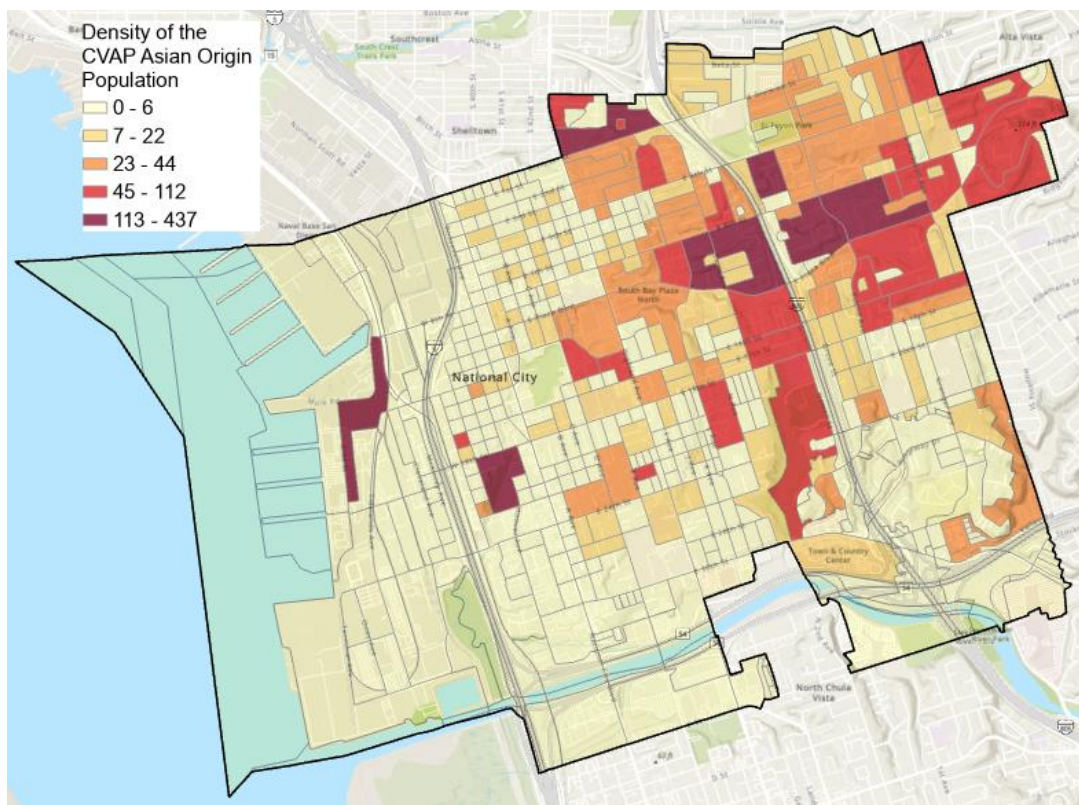


Race Breakdowns / CVAP Totals	37,882
Hispanic/Latino	21,409
	56.51%
White	6,280
	16.58%
Asian	6,580
	17.37%
Black/African American	2,467
	6.51%
Native Hawaiian/Pacific Islander	327
	0.86%
American Indian/Alaska Native	133
	0.35%
Two or More Races	686
	1.81%



District's Demographics

Asian Citizen Voting Age Population Estimates



Race Breakdowns / CVAP Totals		37,882
Hispanic/Latino		21,409
		56.51%
White		6,280
		16.58%
Asian		6,580
		17.37%
Black/African American		2,467
		6.51%
Native Hawaiian/Pacific Islander		327
		0.86%
American Indian/Alaska Native		133
		0.35%
Two or More Races		686
		1.81%



Current Step – Draft Maps

- Draw Draft Trustee Area Plans
 - Demographer to use 2020 Census Data and additionally permitted updated data.
 - Population must be as equal “as is practicable” – people, not citizens.
 - Ed Code section 1002: “...trustee areas shall be as nearly equal in population...”
 - A certain amount of deviation (10%) may be permitted.



Criteria for Consideration

- Comply with the U.S. Constitution.
- Comply with the California Constitution.
- **Population Balance:**
 - Each area shall contain nearly equal number of inhabitants
- **Comply with the Federal Voting Rights Act:**
 - Determine whether it is possible to create an election district or districts in which a minority group is sufficiently large and geographically compact to constitute a majority in a single-member district.



Criteria for Consideration

AB 764 / Elections Code § 21130

Order of priority:

- Contiguous
- Local Neighborhoods/*Communities of Interest*
- City/Census designated places
- Natural/artificial boundaries
- Geographical compactness

Other Criteria for Consideration:

- Other local considerations
- May not adopt boundaries for the purpose of favoring/discriminating against an incumbent, political candidate or political party.

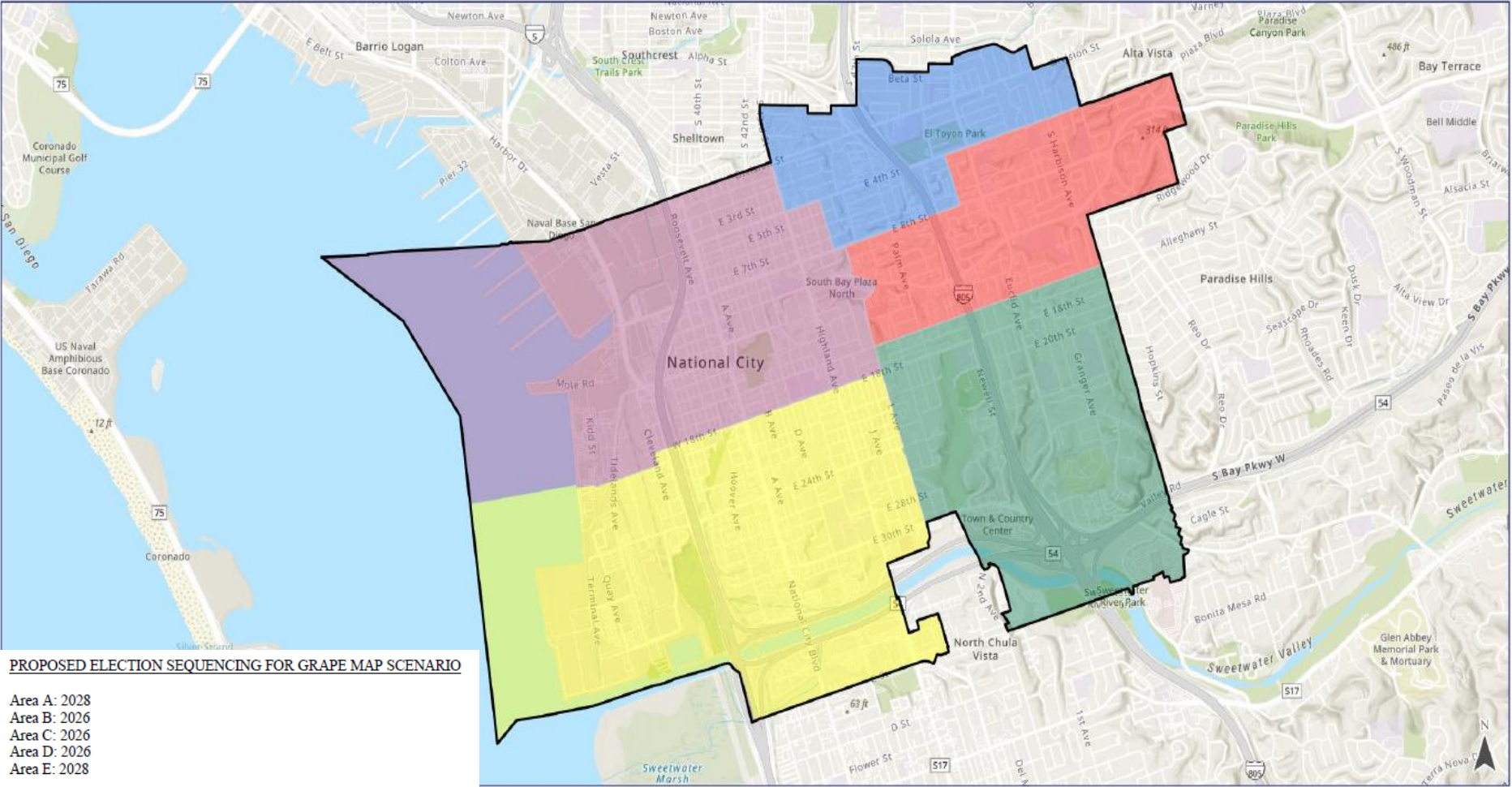


The Map Options - Background

- Each map was randomly assigned a name (i.e., The “Grape” Map).
- The name of the map has nothing to do with the colors of each trustee area *on* each map.
- Each map option has 5 balanced Trustee Areas.
- On each map:
 - Trustee Area A is shaded in **RED**
 - Trustee Area B is shaded in **GREEN**
 - Trustee Area C is shaded in **BLUE**
 - Trustee Area D is shaded in **YELLOW**
 - Trustee Area E is shaded in **PURPLE**



Grape Scenario



PROPOSED ELECTION SEQUENCING FOR GRAPE MAP SCENARIO

Area A: 2028
Area B: 2026
Area C: 2026
Area D: 2026
Area E: 2028

Proposed Areas	Total Population	Total Population Variance	Citizen Voting Age Population 2015-2019 Estimate
Trustee Area A	11,651	3.07%	7,071
Trustee Area B	11,177	-1.12%	6,625
Trustee Area C	11,313	0.08%	6,690
Trustee Area D	10,869	-3.85%	7,956
Trustee Area E	11,510	1.82%	9,540
Totals	56,520	Max Variance 6.92%	37,882

- Trustee Area A
- Trustee Area B
- Trustee Area C
- Trustee Area D
- Trustee Area E

Disclaimer
Of necessity, the outer jurisdictional district boundaries shown here are based on Census block geography (rather than [School District Name] geography) and are approximations of the boundaries as implemented by election officials.

A Census block is the smallest geographic census unit. Blocks can be bounded by visible features such as streets, roads, streams, and railroad tracks, and by nonvisible boundaries, such as selected property lines and city, township, school district, and county limits. Census blocks change every decade.

Data Sources: Census Bureau; Statewide Database, University of California, Berkeley Law, Center for Research; San Diego County Office of Education; National School District; MGT

Basemap Sources: Esri, NASA, NGA, USGS, FEMA, City of Chula Vista, San Diego Unified Port District, SanGIS, California State Parks, CONANP, Esri, TomTom, Garmin, SafeGraph, GeoTechnologies, Inc.

Published Date: April 16, 2025

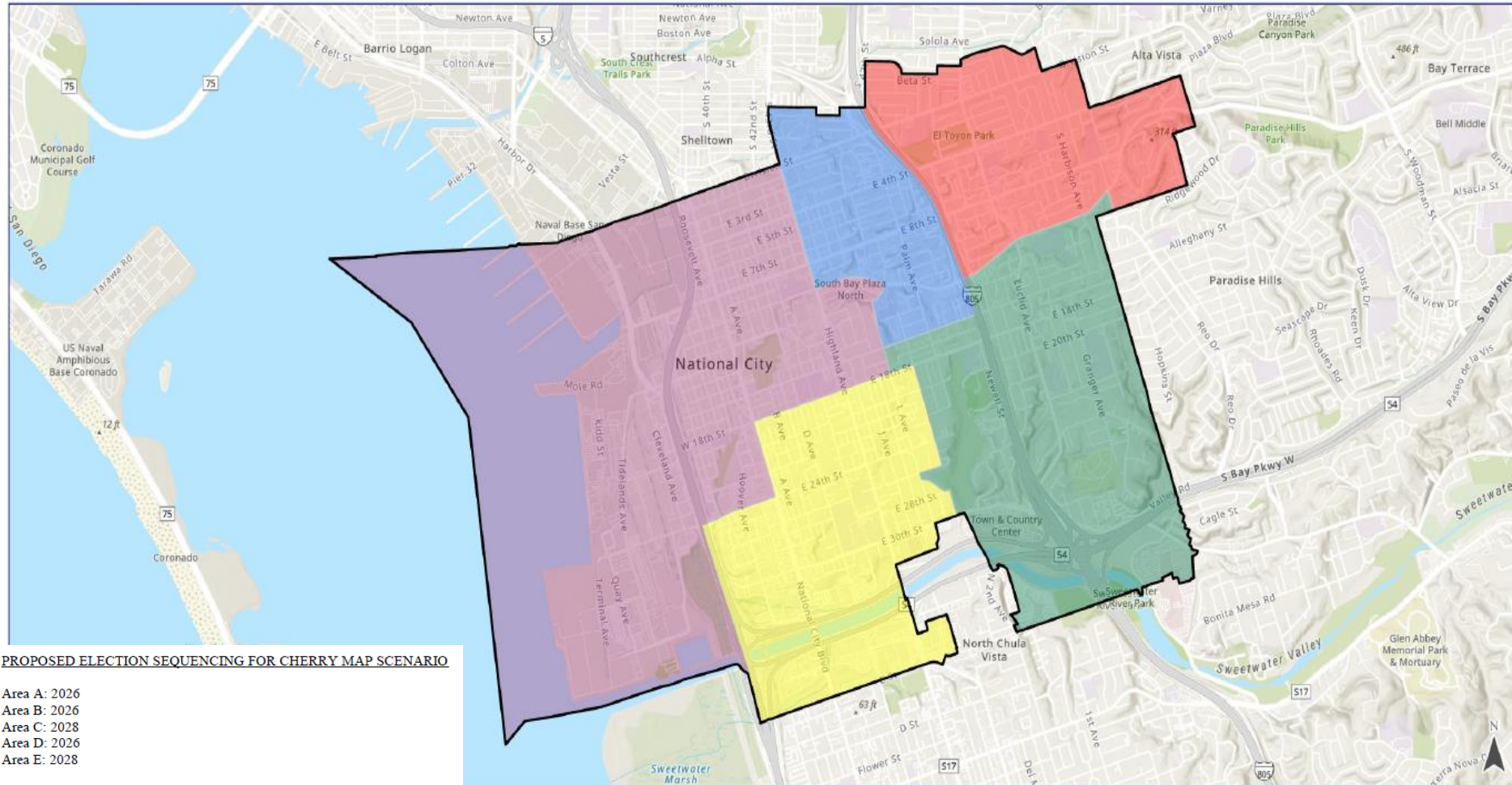
GRAPE SCENARIO - NATIONAL SD TRUSTEE AREAS

Population and Race Data (Census 2020)

Population/Race Breakdowns	TRUSTEE AREA A	TRUSTEE AREA B	TRUSTEE AREA C	TRUSTEE AREA D	TRUSTEE AREA E
Population/Race Breakdowns	11,651	11,177	11,313	10,869	11,510
Variances	347	-127	9	-435	206
	3.07%	-1.12%	0.08%	-3.85%	1.82%
White	1,126	1,018	578	826	939
	9.66%	9.11%	5.11%	7.60%	8.16%
Hispanic/Latino	5,555	8,122	7,560	8,452	7,977
	47.68%	72.67%	66.83%	77.76%	69.30%
Asian	4,076	1,387	2,387	972	1,784
	34.98%	12.41%	21.10%	8.94%	15.50%
Black/African American	498	271	400	332	424
	4.27%	2.42%	3.54%	3.05%	3.68%
American Indian/Alaska Native	23	17	16	27	40
	0.20%	0.15%	0.14%	0.25%	0.35%
Native Hawaiian/Pacific Islander	58	57	85	31	56
	0.50%	0.51%	0.75%	0.29%	0.49%
Other	33	20	31	40	42
	0.28%	0.18%	0.27%	0.37%	0.36%
Two or More Races	282	285	256	189	248
	2.42%	2.55%	2.26%	1.74%	2.15%

GRAPE SCENARIO - - NATIONAL SD TRUSTEE AREAS					
Total Citizen Voting Age Population (2015-2019)					
Population/Race Breakdowns	TRUSTEE AREA A	TRUSTEE AREA B	TRUSTEE AREA C	TRUSTEE AREA D	TRUSTEE AREA E
Total Citizen Voting Age Population	7,071	6,625	6,690	7,956	9,540
CVAP Variance	-505	-951	-886	380	1,964
	-6.67%	-12.56%	-11.70%	5.01%	25.92%
White	1,088	985	737	1,607	1,863
	15.39%	14.87%	11.02%	20.20%	19.53%
Hispanic/Latino	3,139	4,351	3,873	5,088	4,958
	44.39%	65.68%	57.89%	63.95%	51.97%
Asian	2,327	811	1,596	609	1,237
	32.91%	12.24%	23.86%	7.65%	12.97%
Black/African American	352	192	312	477	1,134
	4.98%	2.90%	4.66%	6.00%	11.89%
American Indian/Alaska Native	16	9	3	36	69
	0.23%	0.14%	0.04%	0.45%	0.72%
Native Hawaiian/Pacific Islander	38	112	92	23	62
	0.54%	1.69%	1.38%	0.29%	0.65%
Two or More Races	111	165	77	116	217
	1.57%	2.49%	1.15%	1.46%	2.27%

Cherry Scenario



PROPOSED ELECTION SEQUENCING FOR CHERRY MAP SCENARIO

Area A: 2026
Area B: 2026
Area C: 2028
Area D: 2026
Area E: 2028

Proposed Areas	Total Population	Total Population Variance	Citizen Voting Age Population 2015-2019 Estimate
Trustee Area A	11,167	-1.21%	7,197
Trustee Area B	11,530	2.00%	6,772
Trustee Area C	11,644	3.01%	6,496
Trustee Area D	11,035	-2.38%	6,778
Trustee Area E	11,144	-1.42%	10,639
Totals	56,520	Max Variance 5.39%	37,882

- Trustee Area A
- Trustee Area B
- Trustee Area C
- Trustee Area D
- Trustee Area E

Disclaimer

Of necessity, the outer jurisdictional district boundaries shown here are based on Census block geography (rather than (School District Name) geography) and are approximations of the boundaries as implemented by election officials.

A Census block is the smallest geographic census unit. Blocks can be bounded by visible features such as streets, roads, streams, and railroad tracks, and by nonvisible boundaries, such as selected property lines and city, township, school district, and county limits. Census blocks change every decade.

Data Sources: Census Bureau; Statewide Database, University of California, Berkeley Law, Center for Research; San Diego County Office of Education; National School District; MGT

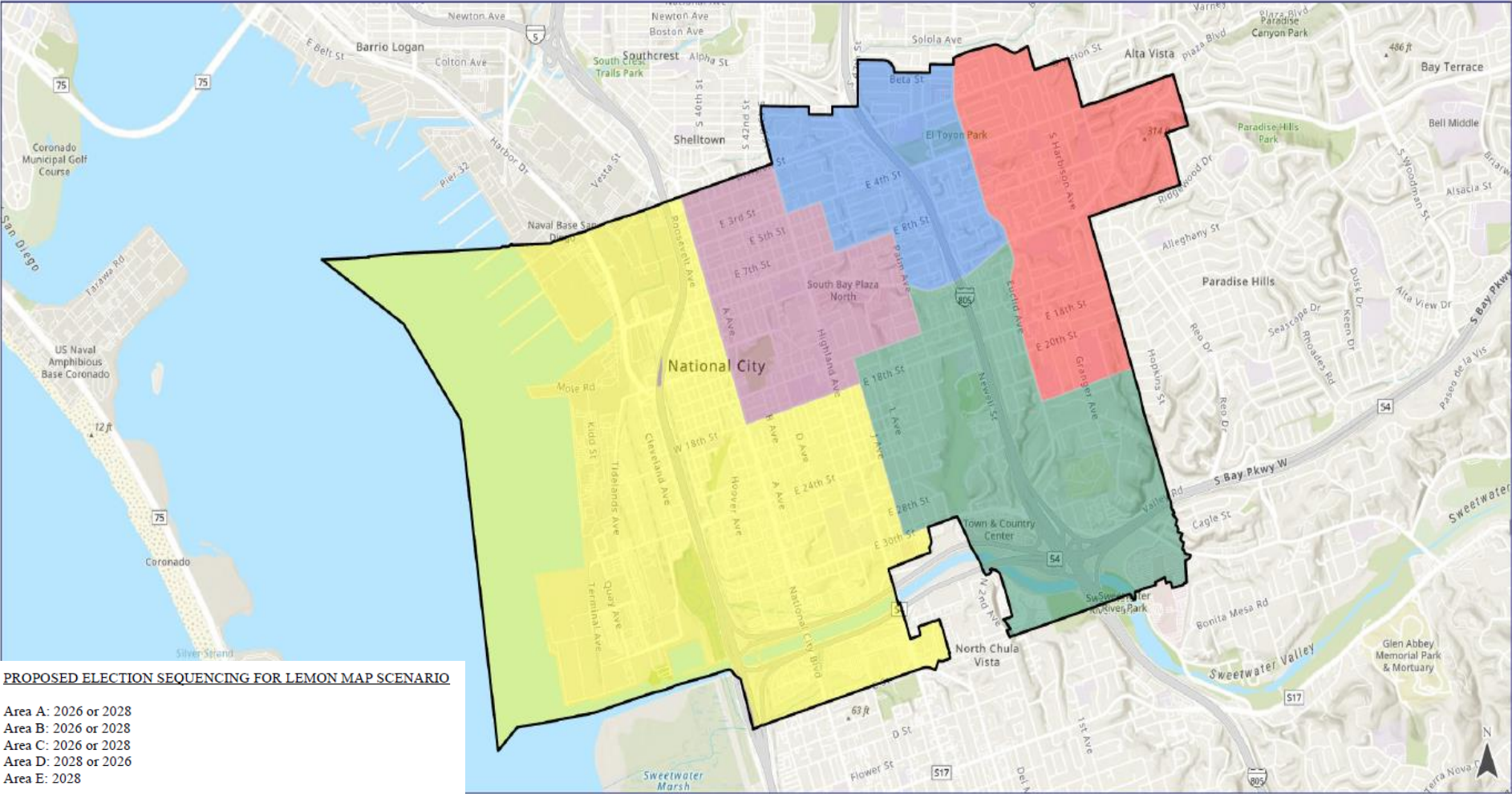
Basemap Sources: Esri, NASA, NGA, USGS, FEMA, City of Chula Vista, San Diego Unified Port District, SanGIS, California State Parks, CONANP, Esri, TomTom, Garmin, SafeGraph, GeoTechnologies, Inc.

Published Date:
April 16, 2025

CHERRY SCENARIO - NATIONAL SD TRUSTEE AREAS					
Population and Race Data (Census 2020)					
Population/Race Breakdowns	TRUSTEE AREA A	TRUSTEE AREA B	TRUSTEE AREA C	TRUSTEE AREA D	TRUSTEE AREA E
Population/Race Breakdowns	11,167	11,530	11,644	11,035	11,144
Variances	-137	226	340	-269	-160
	-1.21%	2.00%	3.01%	-2.38%	-1.42%
White	1,068	985	640	813	981
	9.56%	8.54%	5.50%	7.37%	8.80%
Hispanic/Latino	5,410	8,251	7,629	8,529	7,847
	48.45%	71.56%	65.52%	77.29%	70.41%
Asian	3,796	1,572	2,568	1,076	1,594
	33.99%	13.63%	22.05%	9.75%	14.30%
Black/African American	486	299	432	331	377
	4.35%	2.59%	3.71%	3.00%	3.38%
American Indian/Alaska Native	21	25	14	23	40
	0.19%	0.22%	0.12%	0.21%	0.36%
Native Hawaiian/Pacific Islander	65	61	82	31	48
	0.58%	0.53%	0.70%	0.28%	0.43%
Other	34	21	36	35	40
	0.30%	0.18%	0.31%	0.32%	0.36%
Two or More Races	287	316	243	197	217
	2.57%	2.74%	2.09%	1.79%	1.95%

CHERRY SCENARIO - - NATIONAL SD TRUSTEE AREAS					
Total Citizen Voting Age Population (2015-2019)					
Population/Race Breakdowns	TRUSTEE AREA A	TRUSTEE AREA B	TRUSTEE AREA C	TRUSTEE AREA D	TRUSTEE AREA E
Total Citizen Voting Age Population	7,197	6,772	6,496	6,778	10,639
CVAP Variance	-379	-804	-1,080	-798	3,063
	-5.01%	-10.62%	-14.26%	-10.54%	40.42%
White	1,233	953	635	810	2,649
	17.13%	14.07%	9.78%	11.95%	24.90%
Hispanic/Latino	3,139	4,351	3,873	5,088	4,958
	43.62%	64.25%	59.62%	75.07%	46.60%
Asian	2,179	969	1,647	396	1,389
	30.28%	14.31%	25.35%	5.84%	13.06%
Black/African American	410	196	262	334	1,265
	5.70%	2.89%	4.03%	4.93%	11.89%
American Indian/Alaska Native	19	9	0	17	88
	0.26%	0.13%	0.00%	0.25%	0.83%
Native Hawaiian/Pacific Islander	113	114	11	23	66
	1.57%	1.68%	0.17%	0.34%	0.62%
Two or More Races	104	180	68	110	224
	1.45%	2.66%	1.05%	1.62%	2.11%

Lemon Scenario



Proposed Areas	Total Population	Total Population Variance	Citizen Voting Age Population 2015-2019 Estimate
Trustee Area A	11,099	-1.81%	7,327
Trustee Area B	11,850	4.83%	7,045
Trustee Area C	11,015	-2.56%	5,995
Trustee Area D	11,346	0.37%	10,986
Trustee Area E	11,210	-0.83%	6,529
Totals	56,520	Max Variance 7.39%	37,882

- Trustee Area A
- Trustee Area B
- Trustee Area C
- Trustee Area D
- Trustee Area E

Disclaimer
Of necessity, the outer jurisdictional district boundaries shown here are based on Census block geography (rather than {School District Name} geography) and are approximations of the boundaries as implemented by election officials.

A Census block is the smallest geographic census unit. Blocks can be bounded by visible features such as streets, roads, streams, and railroad tracks, and by nonvisible boundaries, such as selected property lines and city, township, school district, and county limits. Census blocks change every decade.

Data Sources: Census Bureau; Statewide Database; University of California, Berkeley Law, Center for Research; San Diego County Office of Education; National School District; MGT

Basemap Sources: Esri, NASA, NGA, USGS, FEMA, City of Chula Vista, San Diego Unified Port District, SanGIS, California State Parks, CONANP, Esri, TomTom, Garmin, SafeGraph, GeoTechnologies, Inc.

Published Date:
April 16, 2025

MGT

LEMON SCENARIO - NATIONAL SD TRUSTEE AREAS					
Population and Race Data (Census 2020)					
Population/Race Breakdowns	TRUSTEE AREA A	TRUSTEE AREA B	TRUSTEE AREA C	TRUSTEE AREA D	TRUSTEE AREA E
Population/Race Breakdowns	11,099	11,850	11,015	11,346	11,210
Variances	-205	546	-289	42	-94
	-1.81%	4.83%	-2.56%	0.37%	-0.83%
White	1,106	1,016	585	946	834
	9.96%	8.57%	5.31%	8.34%	7.44%
Hispanic/Latino	5,984	8,645	7,091	8,680	7,266
	53.91%	72.95%	64.38%	76.50%	64.82%
Asian	3,178	1,437	2,606	990	2,395
	28.63%	12.13%	23.66%	8.73%	21.36%
Black/African American	447	356	340	408	374
	4.03%	3.00%	3.09%	3.60%	3.34%
American Indian/Alaska Native	15	24	18	37	29
	0.14%	0.20%	0.16%	0.33%	0.26%
Native Hawaiian/Pacific Islander	61	63	78	43	42
	0.55%	0.53%	0.71%	0.38%	0.37%
Other	30	23	31	46	36
	0.27%	0.19%	0.28%	0.41%	0.32%
Two or More Races	278	286	266	196	234
	2.50%	2.41%	2.41%	1.73%	2.09%

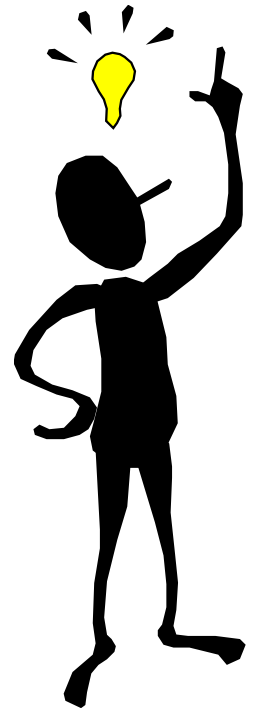
LEMON SCENARIO - - NATIONAL SD TRUSTEE AREAS

Total Citizen Voting Age Population (2015-2019)

Population/Race Breakdowns	TRUSTEE AREA A	TRUSTEE AREA B	TRUSTEE AREA C	TRUSTEE AREA D	TRUSTEE AREA E
Total Citizen Voting Age Population	7,327	7,045	5,995	10,986	6,529
CVAP Variance	-249	-531	-1,581	3,410	-1,047
	-3.29%	-7.01%	-20.87%	45.00%	-13.82%
White	1,021	1,047	814	2,544	854
	13.93%	14.86%	13.58%	23.16%	13.08%
Hispanic/Latino	3,825	4,543	3,228	5,873	3,940
	52.20%	64.49%	53.84%	53.46%	60.35%
Asian	1,955	869	1,548	939	1,269
	26.68%	12.33%	25.82%	8.55%	19.44%
Black/African American	301	253	295	1,306	312
	4.11%	3.59%	4.92%	11.89%	4.78%
American Indian/Alaska Native	1	11	19	64	38
	0.01%	0.16%	0.32%	0.58%	0.58%
Native Hawaiian/Pacific Islander	112	138	11	50	16
	1.53%	1.96%	0.18%	0.46%	0.25%
Two or More Races	112	184	80	210	100
	1.53%	2.61%	1.33%	1.91%	1.53%

Final Thoughts

- Does not change overall District boundaries
- Does not change school attendance boundaries
- **Does not** change how the District is governed:
 - Each Board member, regardless of the trustee area in which he/she resides, still owes fiduciary duty to entire District
 - Still one District with common goals and challenges!!!



Schedule

March 19, 2025	Pre-Map Public Hearing #1
April 9, 2025	Pre-Map Public Hearing #2
<i>Draft map options prepared by demographer</i>	
April 23, 2025	Map Public Hearing #1
May 14, 2025	Map Public Hearing #2
May 28, 2025	Map Public Hearing #3 / Map Adoption





National School District

Creating Successful Learners NOW

[+ Important Links](#)

[Home](#) > [Board](#) > [Trustee Area Election Transition](#) > [Interactive Online Map](#)

TRUSTEE AREA ELECTION TRANSITION

Interactive Online Map

- [Map Options](#)
- [Interactive Online Map](#)
- [Draft Area Map Scenario Cherry](#)
- [Draft Area Map Scenario Grape](#)
- [Draft Area Map Scenario Lemon](#)
- [Letter to Community - Election Transition](#)
- [Board Resolution](#)

Use the search bar below to see where your address falls under different boundary scenarios. Select the blue check boxes to toggle on/off the different scenarios.

Find address or place

- ☒ Schools
- ☒ Elementary Zones
- ☒ District Boundary
- ☐ Grape Scenario
- ☐ Lemon Scenario
- ☒ Cherry Scenario

Schools



Elementary Zones

